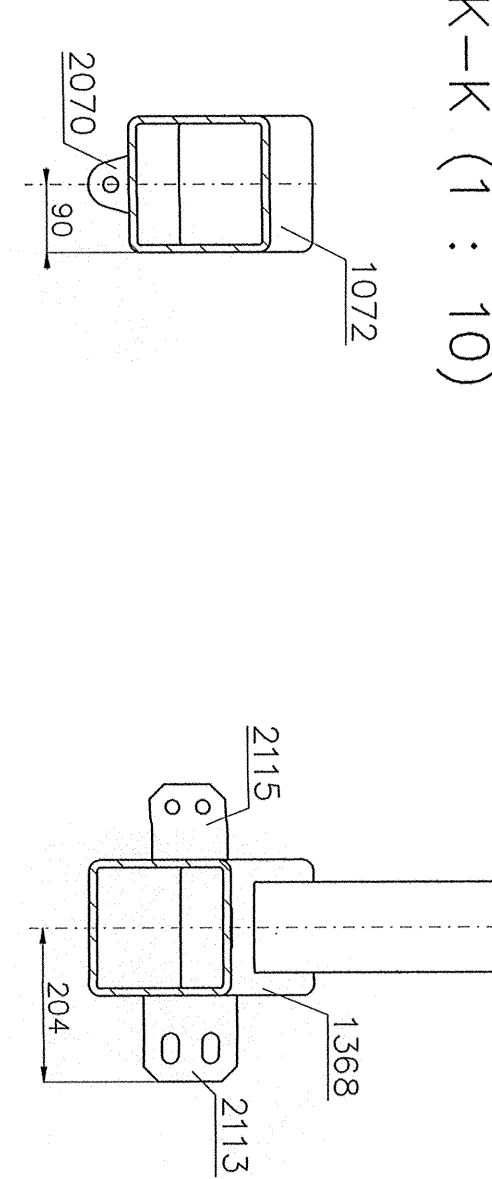
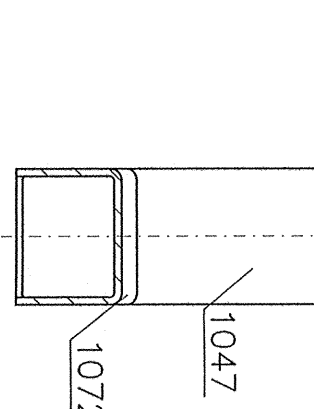
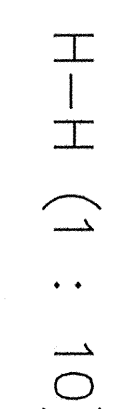
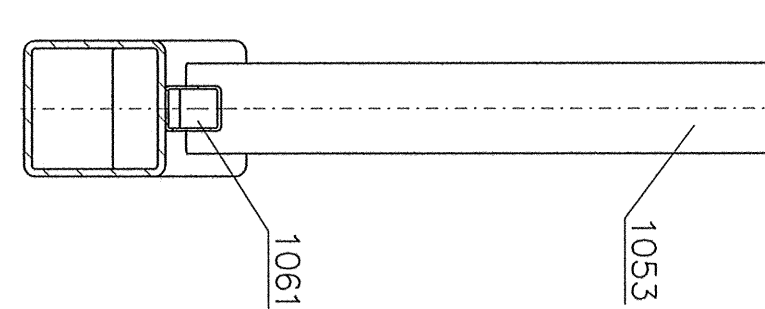
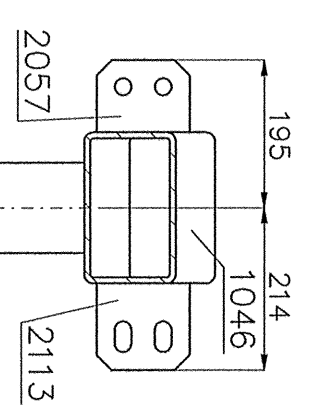
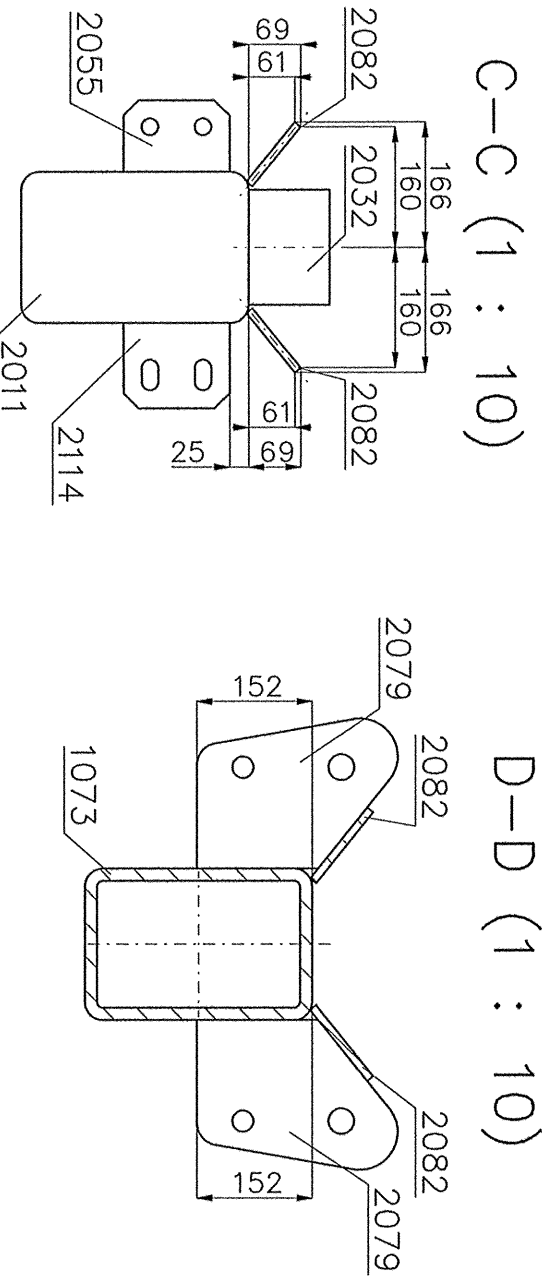
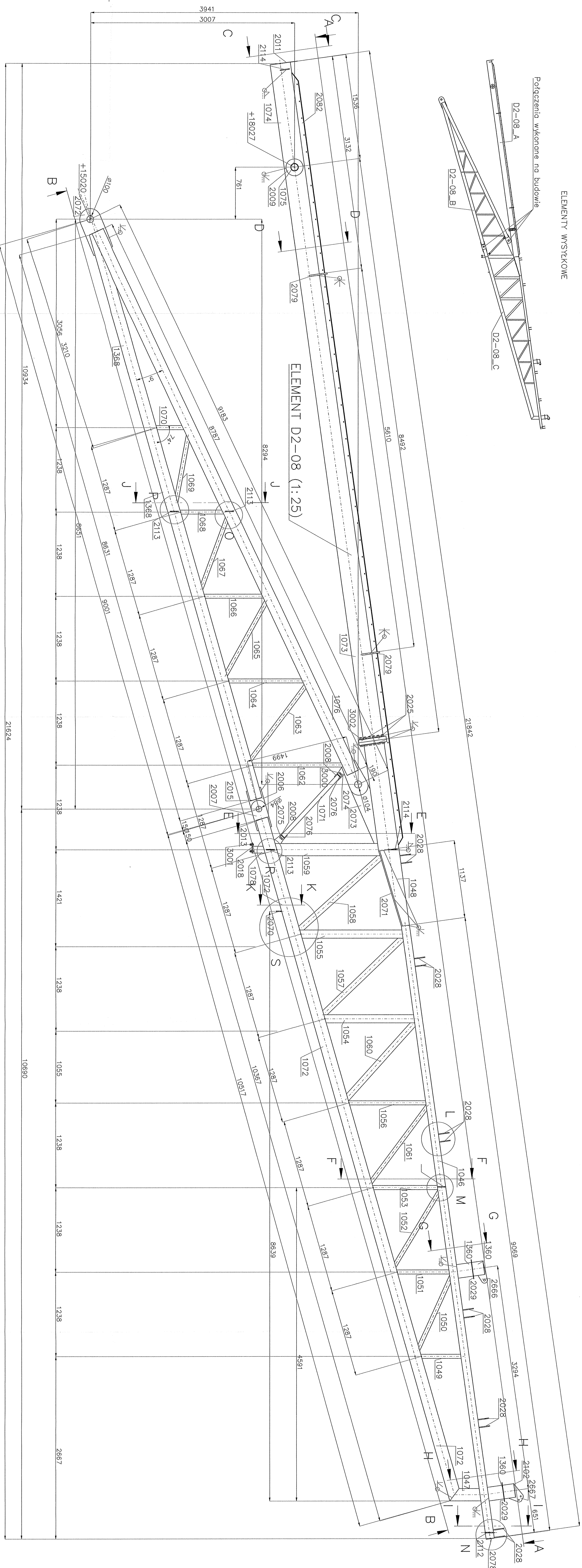


Technical drawing of a roof truss system. The main truss is labeled 'D2-08.C' and features a series of vertical supports and horizontal members. Two smaller trusses, 'D2-08.A' and 'D2-08.B', are shown attached to the main structure. The drawing includes various structural details such as joints, supports, and dimensions.

[illegible]

ROSA BUD S.A.
 ul. 25 GOŚCINIAKÓW 17
 04-400 KŁOBEK, tel. 22 40 40 40, fax 22 40 40 40
 www.rosabud.pl e-mail: biuro@rosabud.pl

WOLNIECH GOSIAK
 ul. 25 GOŚCINIAKÓW 17
 04-400 KŁOBEK, tel. 22 40 40 40, fax 22 40 40 40
 www.wolniegosiek.pl e-mail: biuro@wolniegosiek.pl

PROJEKT WYKONAWCZY – KONSTRUKCJA STALOWA

mgr inż. Lukasz Dłucik	SLK/4903/P00K/13
projektant:	

[illegible]

Nazwa rysunku:	Numer rysunku:
	0 0 0 0 0 0

LEEMENI DZ-00	DOO WIN O I 2 I
---------------	-----------------

SKAID:	1:25	INWAZJA	21.12.2017
Projekt warsztatowy konstrukcji stalowej Stacji nirkarskiej w Rodomiu przy ul. Słowa.			

1350x594	REV-A
----------	-------